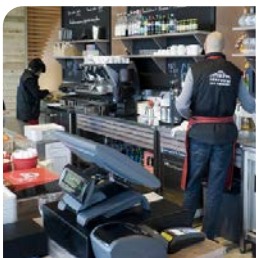
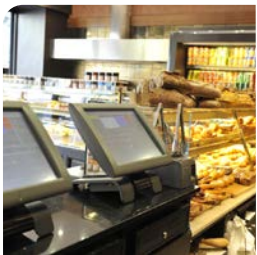


Compact and slim-line integrated EPOS terminal



www.ares.com



Elios is an all-in-one ultra-slim EPOS system, offering a compact and stylish fanless design, ideal for all retail and hospitality environments.

The compact space-saving design houses a reliable and powerful 1.86GHz Intel Atom D2550 Dual Core processor

With its 1.86GHz **INTEL Atom Dual Core** architecture, its slim shape and fanless operation for tough environments, **Élios III** is the perfect system for all types of retail and hospitality applications.

The compact metal base gives **Élios III** great stability and helps manage heat dissipation.

The hard disk, located separately from the

motherboard, ensures that overheating risk is reduced significantly. An SSD option (solid state drive) is also available.

Additionally, the INTEL Atom processor provides excellent graphics capabilities together with low power consumption



ÉLIOS III Compact and slim-line

- Rugged and fanless design for harsh environments
- LED backlit touchscreen
- Metal base for increased stability and heat dissipation
- Cable management hidden in the base
- Hard disk and motherboard located separately (reducing overheating risk)
- Hard disk accessible without any tool
- Multiple communications ports and dedicated connections
- Magnetic Swipe Reader – Dallas Key Reader – RFID – Fingerprint Reader (all optional)
- Optional SSD
- Available with or without built-in customer display



with customer display

MODEL	ÉLIOS III
Processor	1.86GHz INTEL Atom® Dual Core D 2550
Chipset	NM10
Hard disk	1 x HDD 2,5"
Memory	2GB DDR3 SO DIMM (expandable to 4GB)
Touchscreen type	15" resistive (ELO Touch) – 60° tilting screen
	LED backlit
Customer Display	optional (built-in)

C O M M U N I C A T I O N S P O R T S (I / O)	
5 x USB2.0	4 at the rear and 1 at left side of the screen
4 x serial COM RJ-45	with DB9 adaptor
1 x cashdrawer output	(12 & 24 V)
1 x LAN 10/100/1000	
1 x VGA (DB-15F) output	

E N V I R O N M E N T	
Power supply	external 65W – 19V 3.4A
Net weight	6.35 kg (without customer display)
Dimensions (L x D x H)	380 x 272 x 321 mm
OS	Windows XP, XP Pro, POS Ready, Linux

O P T I O N S	
MSR	Swipe Card reader
RFID reader	(contactless reader)
Combined reader 1	Dallas Keys + MSR
Combined reader 2	biometric (fingerprints) + MSR
Flash Drive	SSD



Specifications are subject to change without notice - © AURES 2013

